



Trident GMT 300



Inspired by the oceans, and those who've explored them, your Trident Pro 300 GMT is a timepiece engineered for land, sea and air.

Combining Trident's water resistance of 300 metres with GMT functionality, the Pro 300 GMT is also dripping with 'jet set' glamour. And thanks to its Sellita SW330-2 movement, your watch is among the top six percent of Swiss timepieces for accuracy.

So wherever you take it and however far you dare to go down, it'll have your back. Where will you go first?

 Christopher  
Ward



## Features

- Colimaçoné finishing on the movement
- 56-hour power reserve.
- 25 jewel self-winding mechanical movement.
- Anti-shock system.
- Date calendar.
- Central hacking seconds and GMT complication.
- Brushed and polished Light-Catcher stainless steel case.
- Embossed screw-down crown.
- Bi-directional ceramic or steel bezel.
- Anti-reflective sapphire crystal.
- Polished lacquer dial with top-brushed indexes.
- Diamond polished facets.
- Super-LumiNova Grade X1 BL C1-filled indexes.
- Polished and brushed hands with Super-LumiNova Grade X1 BL C1.

## Technical details

Calibre	Sellita SW330-2
Case	Stainless steel/ceramic bezel
Diameter	40mm
Height	11.65mm
Weight	67g
Water resistance	30 ATM (300m)
Vibrations	28,800 p/hr (4Hz)
Timing tolerance	+/- 20 sec p/day
Power Reserve	56 hours
Lug to lug	47.45mm
Strap width	20mm

## Setting the time, date and GMT hand

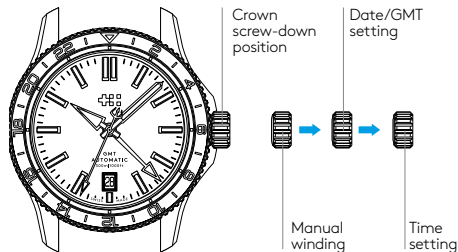
Unscrew the crown\* anti-clockwise from the case to position 2 for winding in power. Wind in a clockwise direction to re-power the watch.

To set the date pull gently into position 3 and turn in an anti-clockwise direction.

To set the GMT hand, turn the crown clockwise and rotate the hand until you have reached the desired time indication. The GMT hand moves in one-hour increments.

Pull gently into position 4. This position is used for handsetting and stopping of the seconds hand. For precise time setting it is recommended to pass beyond the desired minute and to set the hand backwards.

\*The screw-down crown should sit flush to the case (position 1) in order to maintain water resistance.



Date correction should not be carried out between 20:00 hrs to 2:00 hrs as the watch gearing will already be aligning itself to change the date.

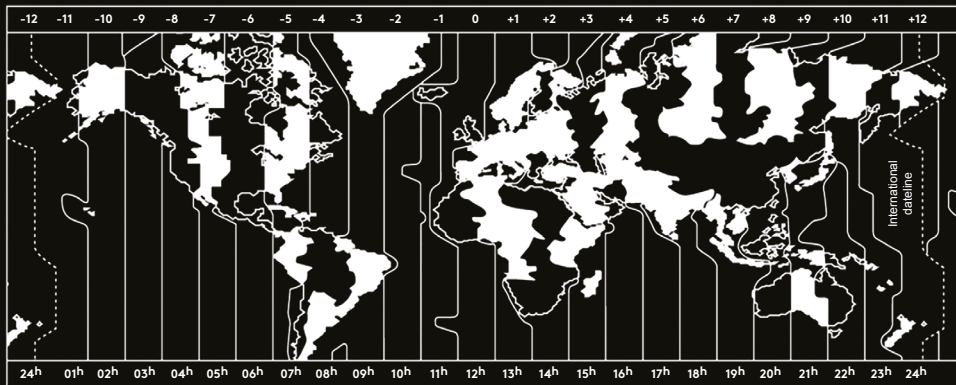
## Using the GMT hand for travel

Set the time in your new destination by pulling the crown into position 4 and move the hour/minute hands until they indicate the desired time.

Push crown into position 3 and wind, clockwise, the GMT hand around the 24-hour scale on the bezel until you have the right time at home. E.g. If you're travelling from London at 12.10 to New York, you would turn the hour/minute hands to 7.10 (New York time is five hours behind London) and wind the GMT hand around to the 12.10 position.

Once set, it means that, for example, you can gauge the time to ring your friends and family without waking them in the middle of the night.

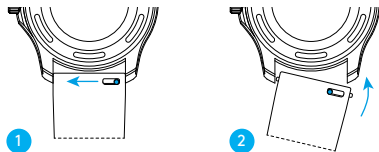
The table below can be used to determine the appropriate time zone when setting the hour/minute hands.



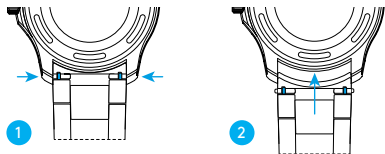
## Using the quick-release pins

- 1 Locate the quick-release pins on the underside of your case. Pinch the pins inwards to detach.
- 2 To reattach your strap or bracelet, pinch the pins inwards, and align the spring bars so they click securely into the lug holes on either side of the strap or bracelet.

## Detaching and reattaching a strap

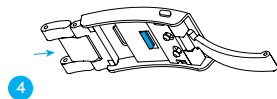
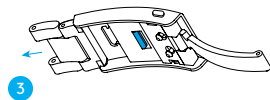
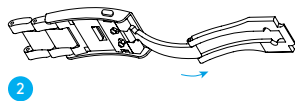
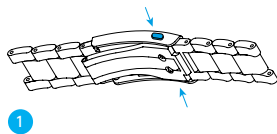


## Detaching and reattaching a bracelet



## Using the micro adjustment on your bracelet

- 1 Press buttons to release.
- 2 Pull open the clasp.
- 3 There are three micro adjustment positions, which allows for a maximum extension of 6mm. To extend, pull the lever to unlock and simultaneously pull on the bracelet into the desired position.
- 4 To shorten simply pull the lever to unlock and push the bracelet back into the clasp.



## Water resistance

Although your watch has been through vigorous static pressure testing, it is worth remembering that there are many variables that can affect the water resistance of your watch. For instance, arm movements during swimming and the sudden impact of diving and water sports will drastically increase the pressure the watch is under.

Wearing your watch in the bath, shower, or sauna can also have an effect as a rapid increase in temperature can cause seals to expand and in extreme cases, malfunction or create condensation.

For these reasons, the water resistance rating of your watch (as shown) should only ever be considered a guideline and we strongly recommend they are always adhered to.

## 30 ATM (300 metres)

Ideal for experienced divers and those practising scuba-diving







### **5 year movement guarantee**

Your watch is powered by a precision-engineered Swiss movement. In the rare event that your movement develops a fault within five years we'll repair it for free under warranty. Your watch will need to be sent to us for a full diagnosis before processing a repair under warranty. You'll always be informed before carrying out any work.

The Guarantee does not cover accidental damage. Any service or repair by a third-party retailer will void your Guarantee. For more details, please visit our website.

### **Service and repairs**

Our approach to service and repairs is about uncompromised quality and great value for money. The process, led by our expert technicians, won't cost the earth and will have the watch back on your wrist in reasonable time. We recommend you service your watch every three to four years to keep it in peak condition.

### **60-day free returns**

We hope you'll be happy with your watch from the moment it arrives. However, if that's not the case you have 60 days to return it in perfect, unused condition (with all its accompanying paperwork) in order to receive a replacement or full refund.



GMT  
AUTOMATIC  
300m/1000ft

8



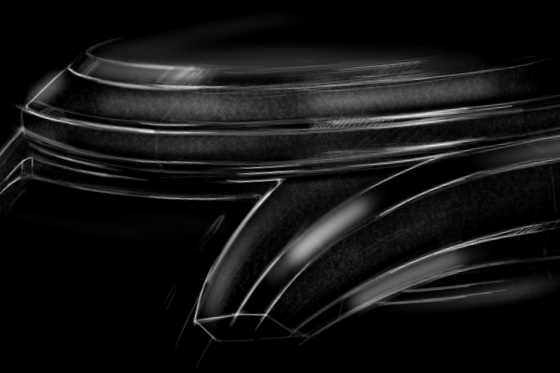
A Christopher Ward watch brings idiosyncratic English design together with Swiss watchmaking expertise. We obsessively oversee every part of the process – and only when we’re delighted with each element of the watch, will we sell it. Something you’ll appreciate whenever you wear it.

## Swiss made

Every Christopher Ward is built by hand in Switzerland, the epicentre of fine watchmaking, which offers an unrivalled pool of talent, enabling us to create watches and movements that rival the best.

It's here that our world-renowned 'JJ Calibres' movements were created, bringing haute horology to a new, wider audience of watch-lovers. And it's in the spotless rooms – and on those rows of white tables – that we created Calibre SH21, the first commercially viable movement from a British brand in 50 years.





## English design

Watchmaking can be conservative. A little too conservative for our taste. From the smooth lines of our iconic Light-catcher™ case to the precision engraving of our twin flags logo on a movement's rotor arm, our approach to design is both bold and detailed. We're careful to play by the rule book but occasionally like to rip it up as well.

England is the nation that gave the world the Aston Martin and the Sex Pistols. The design of our watches reflects both sides of our nature. Often at the same time.

## Innovation

Mechanical watchmaking may be a traditional discipline, but this never stops us from pushing – and breaking – its boundaries.

Which is why we engineered a perpetual moonphase movement that's accurate for 128 years. Re-created the first super compressor mechanism in 50 years. And launched Calibre SH21, the first in-house British movement in decades.

Innovation is at the core of what we do. And our timepieces show this.





Christopher Ward has won a global following – and can justifiably claim to make the most affordable luxury watches in the world.

For many of our fans, the philosophy of trying to put luxury watches within the reach of everyone, is as smart as the timepieces themselves. This open approach sees co-founders Mike France and Peter Ellis communicate personally with customers and listen to their feedback. Something that helps us improve our offering to you.

As the owner of a Christopher Ward watch, if you ever need to get hold of us we're at your service. And if you'd like to explore the CW world more, you can follow us on social media.



ChristopherWardLondon



@chriswardlondon