

C1 Moonphase 37

Owner's handbook



Congratulations on the purchase of your C1 Moonphase 37.

The unadorned dial is made from aventurine – a glass invented on the Venetian island of Murano – infused with reflective copper oxide flakes resembling the night sky.

Dominating the dial is the 'moon' (or moons: two are in constant rotation), made from Globolight, a ceramic-Super-LumiNova mix that allows for intricate sculpting.

And thanks to Calibre JJ04, the moon's journey across the dial will be accurate for the next 128 years. Guaranteed – if fully wound.



Features

- Swiss made
- Self-winding 26 jewel movement with 'JJ04' in-house Moonphase module
- 38-hour power reserve
- Brushed and polished marine-grade stainless steel Light-catcher™ case
- Anti-reflective box sapphire crystal
- Three dimensional luminescent Globolight moons
- Aventurine dial and moon disc
- Fully polished hands
- Push-down crown with twin-flags motif
- Super-LumiNova® Grade X1 WL C1 moons
- Diamond-like carbon (DLC) finished rotor with twin-flags engraving

Technical details

Calibre:	Sellita SW220-1 with JJ04 module
Case:	Stainless steel
Dial:	Aventurine
Diameter:	37mm
Height:	13.10mm
Weight:	52g
Water resistance:	3 ATM (30m)
Vibrations:	28,800 p/hr (4Hz)
Timing tolerance:	+20/-20 sec p/day
Lug to lug:	44.07mm
Strap width:	20 mm
Power reserve:	38 hours

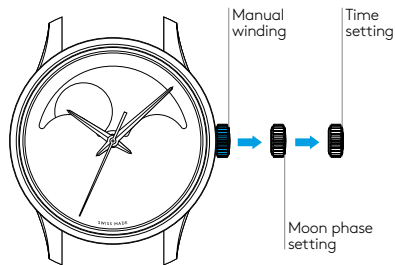
Setting the time and moonphase

To re-power the watch after a period of non-use, simply wind the crown* in a clockwise direction.

Setting the moon phase is relatively simple. For perfect synchronization, you will need to know the current phase of the moon cycle. To adjust the moon phase pull gently into position 2. Turn in an anti-clockwise direction to rotate the moonphase disk into the desired position. Rapid correction of the moonphase is possible at any time without risk of damaging the mechanism.

To set the time pull out the crown gently into position 3. This position is used for handsetting and stopping of the second hand. Turn the crown until you reach the correct time e.g. 10.08 hr.

For precise time setting it is recommended to pass beyond the desired minute and to set the hand backwards.



*The crown should sit flush to the case (position 1) in order to maintain water resistance.

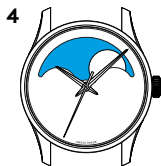
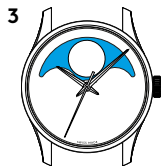
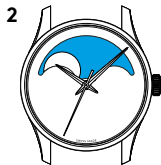
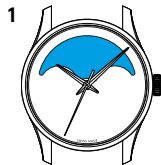
The moon and its phases

The phases of the moon cycle, from one new moon to the next one, lasts 29 days, 12 hours, 44 minutes and 2.8 seconds. The new moon corresponds to the first lunar day (fig. 1). The moon is not visible because its dark side is facing us. On the 8th day (fig. 2), after completing one quarter turn, a crescent moon appears on the left-hand side of the moonphase window with the curve facing to the right.

On the 15th day of the lunar cycle (fig. 3), at the mid-point of its revolution, we see a fully illuminated circle at the 12 o'clock position, indicating the full moon. The moon at this point is directly opposite the sun. On the 23rd day of the lunar cycle (fig. 4), at the end of its third quarter, the crescent appears on the right-hand side of the moonphase window.

A new lunar cycle now commences. The moon changes continuously between these

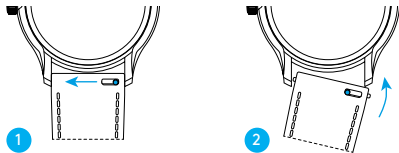
characteristic positions. The time which has elapsed between two new moons corresponds to approximately one month. Due to the regular and repetitive nature of this movement and its phases, the moon has always served as a means of counting the passage of time. Indeed, this is why the lunar calendar is still used for timekeeping purposes.



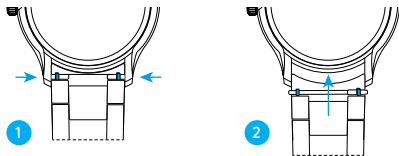
Using the quick-release pins

- 1 Locate the quick-release pins on the underside of your case. Pinch the pins inwards to detach.
- 2 To reattach your strap or bracelet, pinch the pins inwards, and align the spring bars so they click securely into the lug holes on either side of the strap or bracelet.

Detaching and reattaching a strap



Detaching and reattaching a bracelet





Water resistance

Although your watch has been through vigorous static pressure testing, it is worth remembering that there are many variables that can affect the water resistance of your watch. For instance, arm movements during swimming and the sudden impact of diving and water sports will drastically increase the pressure the watch is under.

Wearing your watch in the bath, shower, or sauna can also have an effect as a rapid increase in temperature can cause seals to expand and in extreme cases, malfunction or create condensation.

For these reasons, the water resistance rating of your watch (as shown) should only ever be considered a guideline and we strongly recommend they are always adhered to.

3 ATM (30 metres)

Washing your car and/or
general hose pipe usage





5 year movement guarantee

Your watch is powered by a precision-engineered Swiss movement. In the rare event that your movement develops a fault within five years we'll repair it for free under warranty. Your watch will need to be sent to us for a full diagnosis before processing a repair under warranty. You'll always be informed before carrying out any work.

The Guarantee does not cover accidental damage. Any service or repair by a third-party retailer will void your Guarantee. For more details, please visit our website.

Service and repairs

Our approach to service and repairs is about uncompromised quality and great value for money. The process, led by our expert technicians, won't cost the earth and will have the watch back on your wrist in reasonable time. We recommend you service your watch every three to four years to keep it in peak condition.

60-day free returns

We hope you'll be happy with your watch from the moment it arrives. However, if that's not the case you have 60 days to return it in perfect, unused condition (with all its accompanying paperwork) in order to receive a replacement or full refund.





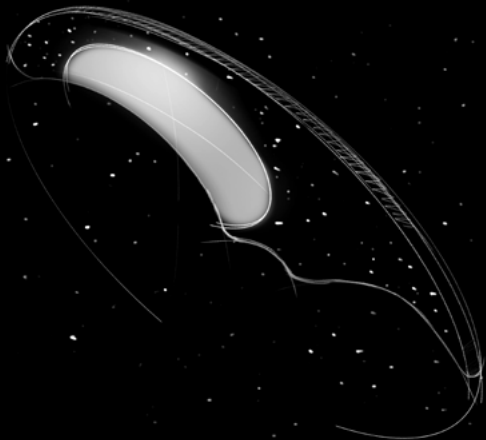
A Christopher Ward watch brings idiosyncratic English design together with Swiss watchmaking expertise. We obsessively oversee every part of the process – and only when we're delighted with each element of the watch, will we sell it. Something you'll appreciate whenever you wear it.

Swiss made

Every Christopher Ward is built by hand in Switzerland, the epicentre of fine watchmaking, which offers an unrivalled pool of talent, enabling us to create watches and movements that rival the best.

It's here that our world-renowned 'JJ Calibres' movements were created, bringing haute horology to a new, wider audience of watch-lovers. And it's in the spotless rooms – and on those rows of white tables – that we created Calibre SH21, the first commercially viable movement from a British brand in 50 years.





English design

Watchmaking can be conservative. A little too conservative for our taste. From the smooth lines of our iconic Light-catcher™ case to the precision engraving of our twin flags logo on a movement's rotor arm, our approach to design is both bold and detailed. We're careful to play by the rule book but occasionally like to rip it up as well.

England is the nation that gave the world the Aston Martin and the Sex Pistols. The design of our watches reflects both sides of our nature. Often at the same time.

Innovation

Mechanical watchmaking may be a traditional discipline, but this never stops us from pushing – and breaking – its boundaries.

Which is why we engineered a perpetual moonphase movement that's accurate for 128 years. Re-created the first super compressor mechanism in 50 years. And launched Calibre SH21, the first in-house British movement in decades.

Innovation is at the core of what we do. And our timepieces show this.





Your Christopher Ward watch is covered by our 60|60 Guarantee.

This means that you can return it 60 days after purchase and receive a full refund (as long as the watch is in perfect condition).

And if your watch develops a mechanical fault within five years (60 months), we'll repair it for free. Please use the warranty card opposite to arrange this.

If you ever need to get hold of us we're at your service. And if you'd like to explore the CW world more, you can follow us on social media.



ChristopherWardLondon



@chriswardlondon