



C1 Bel Canto The Red One

Owner's handbook



It's so red it should see a doctor

Here it is. "The Red One". And it's yours. The incredible micro-engineering of the Christopher Ward Bel Canto combined with the almighty redness of the colour red will leave you in no doubt that the one you chose is indeed "The Red One".

If you want to learn a little bit more about your shiny new timepiece, you've come to the right place, because this manual will tell you everything you need to know. To be honest, I'm impressed you even read this far! So please enjoy "The Red One", and thank you so much for joining me on this journey.

Andrew Morgan, AMW



Features

- Limited run collaboration with Andrew Morgan Watches
- Swiss made
- FS01 striking mechanism
- 38-hour power reserve
- Floating time display
- Brushed and polished Grade 5 Titanium Light-catcher™ case
- Clear movement jewels
- Push-down crown with twin-flags motif
- Mirror polished chiming gong
- Rhodium plated three-dimensional hand finished bridges and hammer mechanism
- On/off pusher at 4 o'clock
- On/off indicator
- Unique screw-down caseback with AMW logo

Technical details

Calibre	Sellita SW200 with FS01
Case	Grade 5 titanium
Diameter	41mm
Height	13mm
Lug to lug	48mm
Weight	53g
Water resistance	3 ATM
Vibrations	28,800 per hour (4Hz)
Tolerance	-20/+20 seconds per day
Strap width	22mm

Setting the time

Wind in a clockwise direction to re-power the watch.

Pull gently into position 2. For precise time setting it is recommended to pass beyond the desired minute and to set the hand backwards.



*The crown should sit flush to the case (position 1) in order to maintain water resistance.

Operating the chime

Your 'Red One' will chime on the hour, every hour.

If you'd like to turn this feature off, press the pusher at the 4 o'clock position on the case.

The indicator on the dial will move from the chime position to the silent position.

When you want to hear the chime again, press the pusher once more and the indicator will move back to the original position.



Chime on



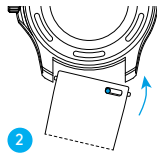
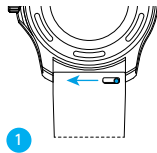
Chime off

Using the quick-release pins

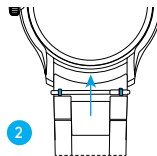
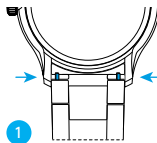
1 Locate the quick-release pins on the underside of your case. Pinch the pins inwards to detach.

2 To reattach your strap or bracelet, pinch the pins inwards, and align the spring bars so they click securely into the lug holes on either side of the strap or bracelet.

Detaching and reattaching a strap



Detaching and reattaching a bracelet

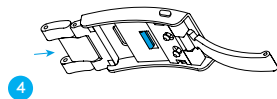
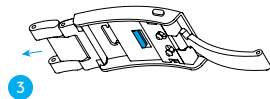
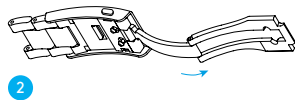
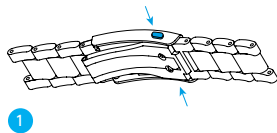


Using the micro adjustment on your bracelet

- 1 Press buttons to release.
- 2 Pull open the clasp.
- 3 There are five micro adjustment positions, which allows for a maximum extension of 10mm. To extend, pull the lever to unlock and simultaneously pull on the bracelet into the desired position.
- 4 To shorten, simply pull the lever to unlock and push the bracelet back into the clasp.

Resizing your Delugs strap

- 1 For detailed instructions on how to resize your Delugs rubber strap, follow this QR code



Water resistance

Although your watch has been through vigorous static pressure testing, it is worth remembering that there are many variables that can affect the water resistance of your watch. For instance, arm movements during swimming and the sudden impact of diving and water sports will drastically increase the pressure the watch is under.

Wearing your watch in the bath, shower, or sauna can also have an effect as a rapid increase in temperature can cause seals to expand and in extreme cases, malfunction or create condensation.

For these reasons, the water resistance rating of your watch (as shown) should only ever be considered a guideline and we strongly recommend they are always adhered to.

3 ATM (30 metres)

Washing your car and/or
general hose pipe usage





5 year movement guarantee

Your watch is powered by a precision-engineered Swiss movement. In the rare event that your movement develops a fault within five years we'll repair it for free under warranty. Your watch will need to be sent to us for a full diagnosis before processing a repair under warranty. You'll always be informed before carrying out any work.

The Guarantee does not cover accidental damage. Any service or repair by a third-party retailer will void your Guarantee. For more details, please visit our website.

Service and repairs

Our approach to service and repairs is about uncompromised quality and great value for money. The process, led by our expert technicians, won't cost the earth and will have the watch back on your wrist in reasonable time. We recommend you service your watch every three to four years to keep it in peak condition.

60-day free returns

We hope you'll be happy with your watch from the moment it arrives. However, if that's not the case you have 60 days to return it in perfect, unused condition (with all its accompanying paperwork) in order to receive a replacement or full refund.



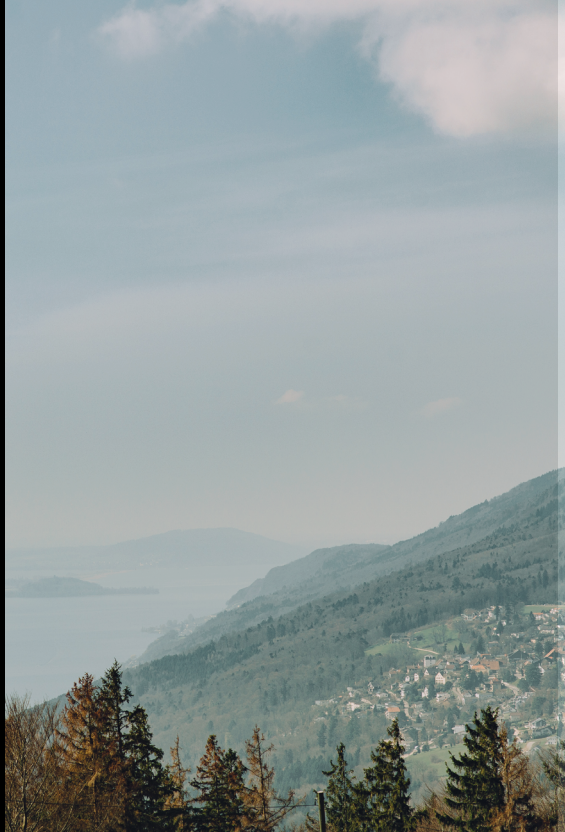


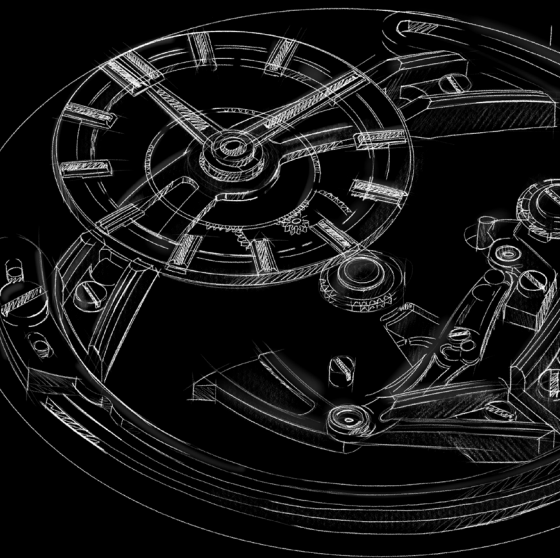
A Christopher Ward watch brings idiosyncratic English design together with Swiss watchmaking expertise. We obsessively oversee every part of the process – and only when we’re delighted with each element of the watch, will we sell it. Something you’ll appreciate whenever you wear it.

Swiss made

Every Christopher Ward is built by hand in Switzerland, the epicentre of fine watchmaking, which offers an unrivalled pool of talent, enabling us to create watches and movements that rival the best.

It's here that our world-renowned 'JJ Calibres' movements were created, bringing haute horology to a new, wider audience of watch-lovers. And it's in the spotless rooms – and on those rows of white tables – that we created Calibre SH21, the first commercially viable movement from a British brand in 50 years.





English design

Watchmaking can be conservative. A little too conservative for our taste. From the smooth lines of our iconic Light-catcher™ case to the precision engraving of our twin flags logo on a movement's rotor arm, our approach to design is both bold and detailed. We're careful to play by the rule book but occasionally like to rip it up as well.

England is the nation that gave the world the Aston Martin and the Sex Pistols. The design of our watches reflects both sides of our nature. Often at the same time.

Innovation

Mechanical watchmaking may be a traditional discipline, but this never stops us from pushing – and breaking – its boundaries.

Which is why we engineered a perpetual moonphase movement that's accurate for 128 years. Re-created the first super compressor mechanism in 50 years. And launched Calibre SH21, the first in-house British movement in decades.

Innovation is at the core of what we do. And our timepieces show this.





Your Christopher Ward watch is covered by our 60|60 Guarantee.

This means that you can return it 60 days after purchase and receive a full refund (as long as the watch is in perfect condition).

And if your watch develops a mechanical fault within five years (60 months), we'll repair it for free. Please use the warranty card opposite to arrange this.

If you ever need to get hold of us we're at your service. And if you'd like to explore the CW world more, you can follow us on social media.



ChristopherWardLondon



@chriswardlondon