

C65 Super Compressor Elite



Your C65 Super Compressor Elite shows how far Christopher Ward will go to improve and innovate.

As with the original C65 Super Compressor, your Elite features a true super compressor mechanism – invented by Ervin Piquerez SA (EPSA) – which increases water-resistance the further you descend.

Another improvement is the dial's decompression scale, while the Sellita SW300 chronometer movement is in the top six percent of Swiss calibres for accuracy.

Should you fancy a change of view, the transparent case back holds a 'coin' bearing the 'diving helmet' emblem of EPSA, and the mark of a genuine super compressor.

Wear it in good health.

 Christopher  
Ward



## Features

- Swiss made
- Functioning Super Compressor spring and mechanism.
- Self-winding SW300-1 with Chronometer movement
- Up to 56 hours power reserve
- Anti-shock system
- Brushed and polished Light-catcher™ steel case
- Screw down, display caseback with steel coin
- Embossed screw-down crown
- Unidirectional inner diving bezel
- Anti-reflective domed sapphire crystal
- Sunray dial with colour gradient
- Compression timer scale
- Diamond polished hands and indexes
- Super-LumiNova® Grade X1 GL C1 hands and indexes

## Technical details

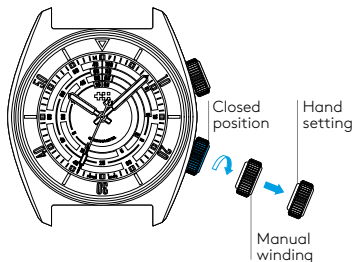
Calibre	Sellita SW300-1 Automatic COSC
Case	Stainless steel
Diameter	41mm
Height	13.75mm
Weight	71g
Water resistance	15 ATM (150m)
Vibrations	28,800 p/hr (4Hz)
Timing tolerance	-4/+6 sec p/day
Lug to lug	47.12mm
Strap width	22mm

## Setting the time

Unscrew the crown\* anti-clockwise from the case to position 2 for winding in power. Wind in a clockwise direction to re-power the watch.

Pull gently into position 3. This position is used for handsetting and stopping of the seconds hand.

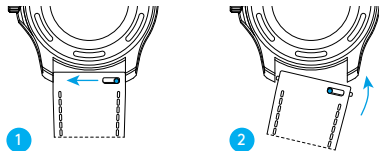
For precise time setting it is recommended to pass beyond the desired minute and to set the hand backwards.



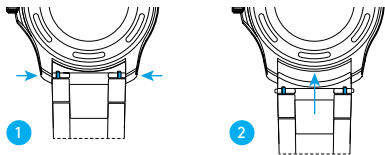
## Using the quick-release pins

- 1 Locate the quick-release pins on the underside of your case. Pinch the pins inwards to detach.
- 2 To reattach your strap or bracelet, pinch the pins inwards, and align the spring bars so they click securely into the lug holes on either side of the strap or bracelet.

## Detaching and reattaching a strap



## Detaching and reattaching a bracelet



## Diving with your watch

If using the bezel for a dive and let's say the recognised maximum "no-stop time" is 55 minutes, then in this example (shown right) the time at the surface immediately before the dive is 10.08am. However the bezel marker is at the 12.00 hr position.

Move the bezel marker anti-clockwise so that it aligns with the 8 minute position.

You can now read that the 55 minute no decompression limit will occur at 3 minutes past the next hour.



It is always useful and best practice to make a note on a dive slate before entering the water and to carry a set of dive tables should the dive plan change during the course of a dive. A safety stop for 3 to 5 minutes at 15ft is recommended at the end of all dives. A safety stop for 3 minutes at 15ft is required any time you come within 3 pressure groups of a no decompression limit, and for any dive to a depth of 100ft or deeper.

## How to use your watch's decompression scale

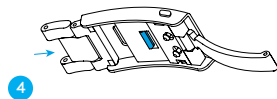
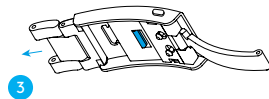
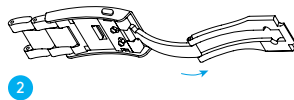
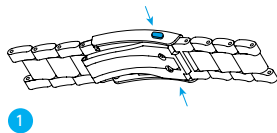
A decompression scale is a reference tool for divers to consult before they take to the water. It enables you to work out how long your decompression stops should be – depending on how far down you'll go and how long you'll stay there.

Say you're planning on diving at 30m for 35 minutes. Go to the concentric ring with '30/95' printed at the top and follow it around until you hit the 35-minute index on the 'regular' part of the dial. You can see that your decompression stop should be 15 minutes. You'll also notice some circular orange bands. These tell you the no decompression limit for each depth. If you choose to dive to 25m/80ft, the orange band goes to the 35-minute mark on the dial, which is how long you can dive at this depth without taking a decompression break.



## Using the micro adjustment on your bracelet

- 1 Press buttons to release.
- 2 Pull open the clasp.
- 3 There are three micro adjustment positions, which allows for a maximum extension of 6mm. To extend, pull the lever to unlock and simultaneously pull on the bracelet into the desired position.
- 4 To shorten, simply pull the lever to unlock and push the bracelet back into the clasp.





## Water resistance

Although your watch has been through vigorous static pressure testing, it is worth remembering that there are many variables that can affect the water resistance of your watch. For instance, arm movements during swimming and the sudden impact of diving and water sports will drastically increase the pressure the watch is under.

Wearing your watch in the bath, shower, or sauna can also have an effect as a rapid increase in temperature can cause seals to expand and in extreme cases, malfunction or create condensation.

For these reasons, the water resistance rating of your watch (as shown) should only ever be considered a guideline and we strongly recommend they are always adhered to.

**15 ATM (150 metres)**

Safe to use while snorkelling  
in open water





### **5 year movement guarantee**

Your watch is powered by a precision-engineered Swiss movement. In the rare event that your movement develops a fault within five years we'll repair it for free under warranty. Your watch will need to be sent to us for a full diagnosis before processing a repair under warranty. You'll always be informed before carrying out any work.

The Guarantee does not cover accidental damage. Any service or repair by a third-party retailer will void your Guarantee. For more details, please visit our website.

### **Service and repairs**

Our approach to service and repairs is about uncompromised quality and great value for money. The process, led by our expert technicians, won't cost the earth and will have the watch back on your wrist in reasonable time. We recommend you service your watch every three to four years to keep it in peak condition.

### **60-day free returns**

We hope you'll be happy with your watch from the moment it arrives. However, if that's not the case you have 60 days to return it in perfect, unused condition (with all its accompanying paperwork) in order to receive a replacement or full refund.



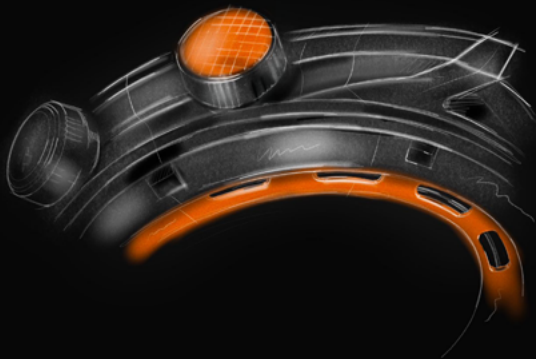
A Christopher Ward watch brings idiosyncratic English design together with Swiss watchmaking expertise. We obsessively oversee every part of the process – and only when we're delighted with each element of the watch, will we sell it. Something you'll appreciate whenever you wear it.

## Swiss made

Every Christopher Ward is built by hand in Switzerland, the epicentre of fine watchmaking, which offers an unrivalled pool of talent, enabling us to create watches and movements that rival the best.

It's here that our world-renowned 'JJ Calibres' movements were created, bringing haute horology to a new, wider audience of watch-lovers. And it's in the spotless rooms – and on those rows of white tables – that we created Calibre SH21, the first commercially viable movement from a British brand in 50 years.





## English design

Watchmaking can be conservative. A little too conservative for our taste. From the smooth lines of our iconic Light-catcher™ case to the precision engraving of our twin flags logo on a movement's rotor arm, our approach to design is both bold and detailed. We're careful to play by the rule book but occasionally like to rip it up as well.

England is the nation that gave the world the Aston Martin and the Sex Pistols. The design of our watches reflects both sides of our nature. Often at the same time.

## Innovation

Mechanical watchmaking may be a traditional discipline, but this never stops us from pushing – and breaking – its boundaries.

Which is why we engineered a perpetual moonphase movement that's accurate for 128 years. Re-created the first super compressor mechanism in 50 years. And launched Calibre SH21, the first in-house British movement in decades.

Innovation is at the core of what we do. And our timepieces show this.





Christopher Ward has won a global following – and can justifiably claim to make the most affordable luxury watches in the world.

For many of our fans, the philosophy of trying to put luxury watches within the reach of everyone, is as smart as the timepieces themselves. This open approach sees co-founders Mike France and Peter Ellis communicate personally with customers and listen to their feedback. Something that helps us improve our offering to you.

As the owner of a Christopher Ward watch, if you ever need to get hold of us we're at your service. And if you'd like to explore the CW world more, you can follow us on social media.



ChristopherWardLondon



@chriswardlondon