



The spirit of exploration permeates your C63 Sealander GMT LE.

As a 'GMT-explorer', it boasts a fixed 24-hour bezel rather than the rotating one you'll find on most GMT watches. GMT-explorers were originally made for pro-cavers who could become disorientated after long periods in the dark. With no daylight to guide them, they set the fourth GMT hand to their present time zone, using the fixed 24-hour bezel.

The C63 Sealander GMT LE can be used this way or as a regular GMT, keeping track of another timezone. It's also, as you'd expect, an accurate and robust timing instrument.

Enjoy your adventures together!

 **Christopher
Ward**



Features

- Swiss made
- Limited edition of 50 pieces
- Self-winding 25 jewel mechanical movement certified COSC
- 56 hours power reserve
- Twin-flag engraving over 'Colimaçoné' finish on the rotor
- Elaboré 'Colimaçoné' finish on the movement
- Brushed and polished marine-grade stainless steel case
- GMT complication
- Screw-down display caseback
- Anti-reflective sapphire crystal
- Date calendar
- Brushed and polished hands
- Super-LumiNova® Grade X1 BL C1 hands and indexes
- Brushed and polished five-link Consort bracelet with butterfly clasp
- Eco-friendly luxury presentation case and owner's handbook

Technical details

Calibre	Sellita SW330-1 COSC
Case	Stainless steel
Dial	Silver sunray
Diameter	39mm
Height	11.85mm
Weight	62g
Water resistance	15 ATM (150 metres)
Vibrations	28,800 p/hr (4Hz)
Timing tolerance	-4/+6 sec p/day
Lug to lug	45.85mm
Strap width	20mm

Setting the time, date and GMT hand

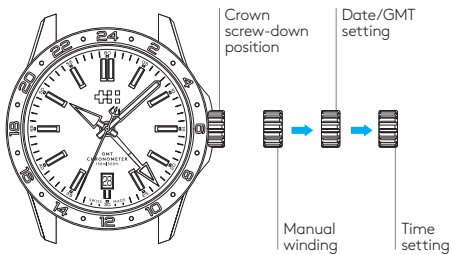
Unscrew the crown* anti-clockwise from the case to position 2 for winding in power. Wind in a clockwise direction to re-power the watch.

To set the date pull gently into position 3 and turn in an anti-clockwise direction.

To set the GMT hand, turn the crown clockwise and rotate the hand until you have reached the desired time indication. The GMT hand moves in one-hour increments.

Pull gently into position 4. This position is used for handsetting and stopping of the seconds hand. For precise time setting it is recommended to pass beyond the desired minute and to set the hand backwards.

*The screw-down crown should sit flush to the case (position 1) in order to maintain water resistance.

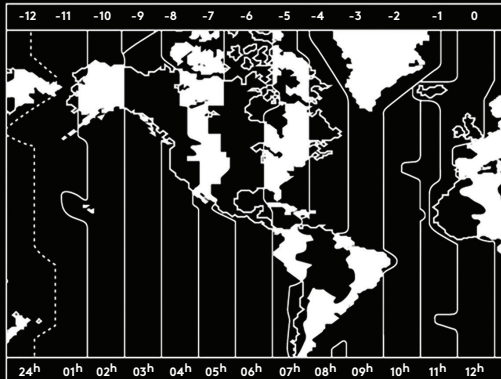


Date correction should not be carried out between 20:00 hrs to 2:00 hrs as the watch gearing will already be aligning itself to change the date.

Using the GMT hand for travel

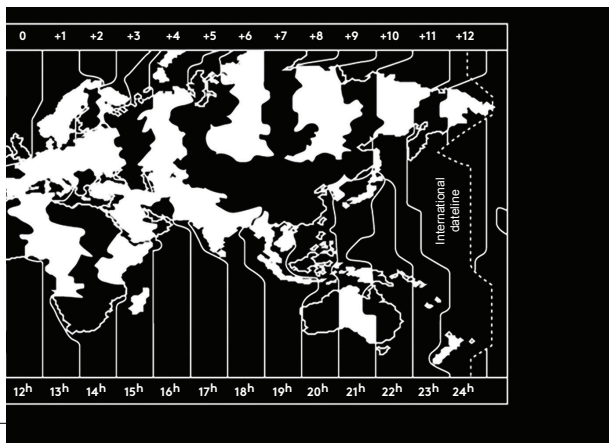
Set the time in your new destination by pulling the crown into position 4 and move the hour/minute hands until they indicate the desired time.

Push crown into position 3 and wind, clockwise, the GMT hand around the 24-hour scale on the bezel until you have the right time at home. E.g. If you're travelling from London at 12.10 to New York, you would turn the hour/minute hands to 7.10 (New York time is five hours behind London) and wind the GMT hand around to the 12.10 position.



Once set, it means that, for example, you can gauge the time to ring your friends and family without waking them in the middle of the night.

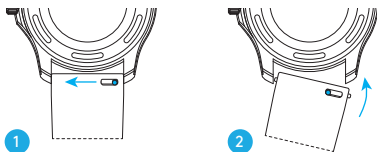
The table below can be used to determine the appropriate time zone when setting the hour/minute hands.



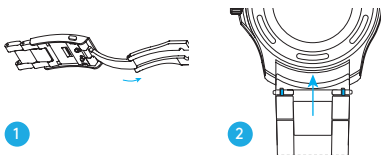
Using the quick-release pins

- 1 Locate the quick-release pins on the underside of your case. Pinch the pins inwards to detach.
- 2 To reattach your strap or bracelet, pinch the pins inwards, and align the spring bars so they click securely into the lug holes on either side of the strap or bracelet.

Detaching and reattaching a strap

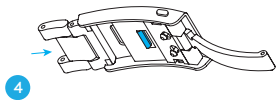
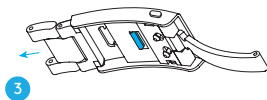
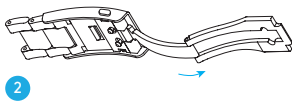
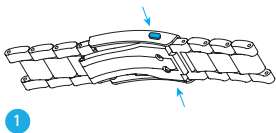


Detaching and reattaching a bracelet



Using the micro adjustment on your bracelet

- 1 Press buttons to release.
- 2 Pull open the clasp.
- 3 There are three micro adjustment positions, which allows for a maximum extension of 6mm. To extend, pull the lever to unlock and simultaneously pull on the bracelet into the desired position.
- 4 To shorten simply pull the lever to unlock and push the bracelet back into the clasp.



Water resistance

Although your watch has been through vigorous static pressure testing, it is worth remembering that there are many variables that can affect the water resistance of your watch. For instance, arm movements during swimming and the sudden impact of diving and water sports will drastically increase the pressure the watch is under.

Wearing your watch in the bath, shower, or sauna can also have an effect as a rapid increase in temperature can cause seals to expand and in extreme cases, malfunction or create condensation.

For these reasons, the water resistance rating of your watch (as shown) should only ever be considered a guideline and we strongly recommend they are always adhered to.

15 ATM (150 metres)
Safe to use while snorkelling
in open water





5 year movement guarantee

Your watch is powered by a precision-engineered Swiss movement. In the rare event that your movement develops a fault within five years we'll repair it for free under warranty. Your watch will need to be sent to us for a full diagnosis before processing a repair under warranty. You'll always be informed before carrying out any work.

The Guarantee does not cover accidental damage. Any service or repair by a third-party retailer will void your Guarantee. For more details, please visit our website.

Service and repairs

Our approach to service and repairs is about uncompromised quality and great value for money. The process, led by our expert technicians, won't cost the earth and will have the watch back on your wrist in reasonable time. We recommend you service your watch every three to four years to keep it in peak condition.

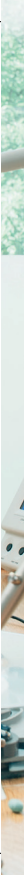
60-day free returns

We hope you'll be happy with your watch from the moment it arrives. However, if that's not the case you have 60 days to return it in perfect, unused condition (with all its accompanying paperwork) in order to receive a replacement or full refund.







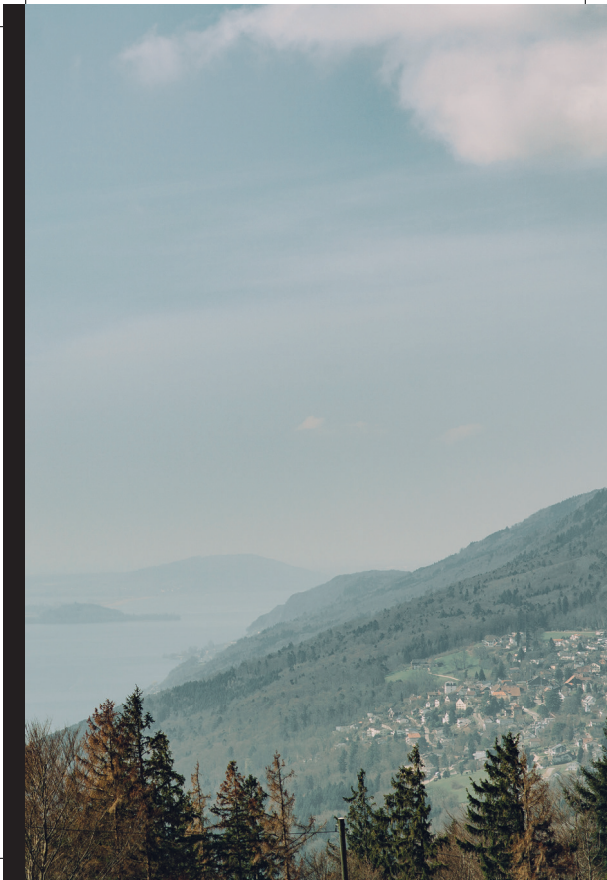


A Christopher Ward watch brings idiosyncratic English design together with Swiss watchmaking expertise. We obsessively oversee every part of the process – and only when we're delighted with each element of the watch, will we sell it. Something you'll appreciate whenever you wear it.

Swiss made

Every Christopher Ward is built by hand in Switzerland, the epicentre of fine watchmaking, which offers an unrivalled pool of talent, enabling us to create watches and movements that rival the best.

It's here that our world-renowned 'JJ Calibres' movements were created, bringing haute horology to a new, wider audience of watch-lovers. And it's in the spotless rooms – and on those rows of white tables – that we created Calibre SH21, the first commercially viable movement from a British brand in 50 years.





English design

Watchmaking can be conservative. A little too conservative for our taste. From the smooth lines of our iconic Light-catcher™ case to the precision engraving of our twin flags logo on a movement's rotor arm, our approach to design is both bold and detailed. We're careful to play by the rule book but occasionally like to rip it up as well.

England is the nation that gave the world the Aston Martin and the Sex Pistols. The design of our watches reflects both sides of our nature. Often at the same time.

Innovation

Mechanical watchmaking may be a traditional discipline, but this never stops us from pushing – and breaking – its boundaries.

Which is why we engineered a perpetual moonphase movement that's accurate for 128 years. Re-created the first super compressor mechanism in 50 years. And launched Calibre SH21, the first in-house British movement in decades.

Innovation is at the core of what we do. And our timepieces show this.





Christopher Ward has won a global following – and can justifiably claim to make the most affordable luxury watches in the world.

For many of our fans, the philosophy of trying to put luxury watches within the reach of everyone, is as smart as the timepieces themselves. This open approach sees co-founders Mike France and Peter Ellis communicate personally with customers and listen to their feedback. Something that helps us improve our offering to you.

As the owner of a Christopher Ward watch, if you ever need to get hold of us we're at your service. And if you'd like to explore the CW world more, you can follow us on social media.



ChristopherWardLondon



@chriswardlondon